

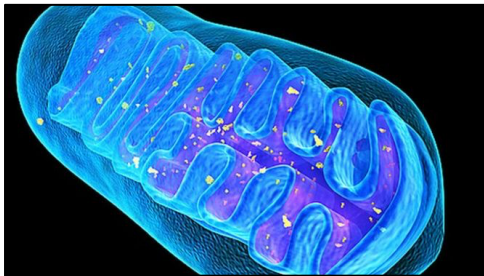
# Methylene Blue & Metabolic Medicine

## The “Magic Bullet” & Futuristic Medicine.



*Many of the suggestions in this chapter are not meant to be performed without consulting your healthcare provider first.*

### *Metabolic Medicine, the Future of Medicine.*



Metabolic medicine is the future of medicine as the most “upstream” aspect of health and is at the root of most all diseases. Our current pharmaceutical-based medical system is a broken system.

It has failed miserably as we have more disease than

many countries here in the USA while we possess most of the medicines, yet we are much sicker than most countries with far less “modern” pharmaceutical-based health care. Bottom line is our

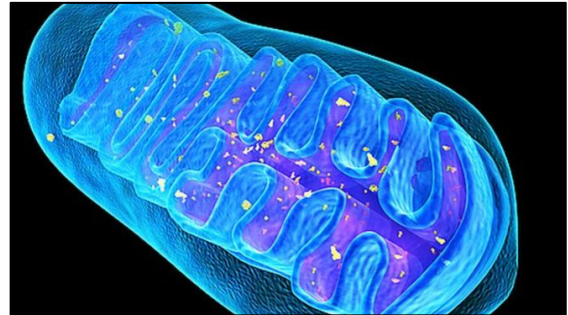
*Many human diseases involve abnormal metabolic states that interrupt normal physiology and lead to tissue and cellular disruption.*

drugs are killing us. The idea that we can “cure” disease by giving a certain molecule (drug) for a certain

condition has shown to be like painting over rust leaving the patient as the victim to only need more drugs for side effects of the first drug and so on. Your body is a self-healing, self-regulating and intelligent organism with contains all it needs to be healthy and repair itself. It’s not about chasing genes either because your

*Your body is a self healing, self regulating and intelligent organism with contains all it needs to be healthy and repair itself.*

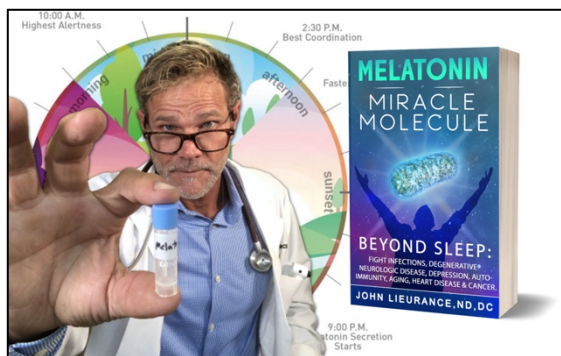
genes fail due to a poor stress response which is generally caused by a poor metabolic capacity of your cells. Any human diseases involve abnormal metabolic states that interrupt normal physiology and lead to tissue and cellular disruption. When you get to the top of the mountain where the stream begins you have *metabolism* and the ability to make adequate energy with as little waste as possible. This is a new health paradigm for treating disease which will allow the body with its innate wisdom to figure the complexities out with its new found spark of life. Not only does this medicine work but it actually addresses the cause of many conditions. In this article we will dive into how to use the science of metabolic medicine to gain better health and vitality. In order to fully understand how metabolic medicine works you need to have a base of knowledge of the mitochondria.



## Mitochondria & Cellular Wellness

The mitochondria are where you convert glucose and oxygen into energy through something called the electron transport chain. This is where electrons are moved through a chain of chemical reactions to produce what's called an exothermic reaction. Moving electrons creates energy your cells utilize to do work, like keeping up with all of their functions. Just like a train which burns coal to produce energy that drives the train down the tracks, your cells burn sugar. And just like the train produces toxins that are released when the coal is burned in the form of smoke, your cells also produce a toxic by product called oxidation. The ability of the mitochondria to stay healthy and continue to efficiently make energy hinges on its ability to neutralize these harmful byproducts. Antioxidants are the primary method the mitochondria use to do this. Consider your brain is 2% of your bodyweight however it consumes 20% of the overall energy. Your brain and your heart are the two most energy demanding systems and require a high total energy supply. When that starts to run low, both your heart and your brain being very “metabolically sensitive” organs will begin to show signs of stress such as being

*Melatonin is produced by every mitochondria and is the primary way that the mitochondria neutralizes the stress of oxidation.*

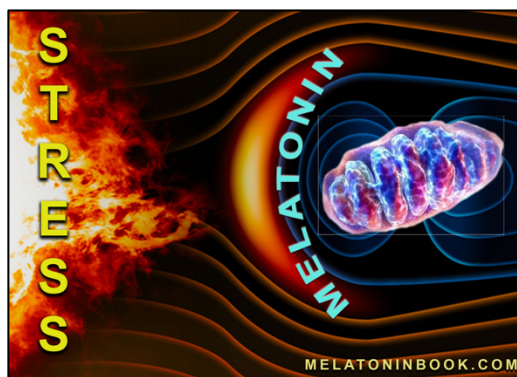


fatigued and developing disease. Making your mitochondria more efficient is the name of the game to improve all aspects of health, vitality and lifespan. The good news is there are some great ways to do this through something called the cytochrome pathway. There are 4 complexes in the cytochrome pathway and I will reveal a way to

access all 4 cytochrome pathways later. I will also be discussing strategies to greatly improve mitochondrial function through something called autophagy and mitophagy. First it is important to fully understand how stress and cytokines work at the cellular level to appreciate some of my methods that I will share.

## Stress, Cytokines & Melatonin.

All stressors lead to one outcome which is inflammation. Whether it's a sunburn, an infection or even intense exercise there is a specific set of cytokines that are responsible for the inflammation that occurs, which in essence is cellular stress. When that inflammation or the cytokines become too overwhelming for the cell to deal with, it switches its energy production method from moving electrons in the mitochondria to a very primitive way of making energy called aerobic glycolysis. The problem with aerobic glycolysis is that it only produces 10% of the energy that is otherwise created through the electron transport chain. This is what chokes off the energy reserves with COVID-19 when a patient goes into a cytokine storm that typically leads to death due to acute respiratory distress syndrome. Melatonin is the molecule that is the primary antioxidant within all of your cells that neutralizes this oxidation and can return the energy production back to its proper 100% functioning through the electron transport chain. I wrote a book called Melatonin: Miracle Molecule. You can find information on this at [melatoninbook.com](http://melatoninbook.com). In that book, we discussed how melatonin has been shown to enhance the health of virtually every system in your body.



There is a large body of research that supports the use of high dose melatonin for a variety of different diseases. When you consider that the brain and the heart are the two most metabolically sensitive organs in the body it is easy to understand that melatonin may improve the function of the central nervous system and support many people looking to improve the health of their brain.

## Stress & The Metabolic Ceiling.

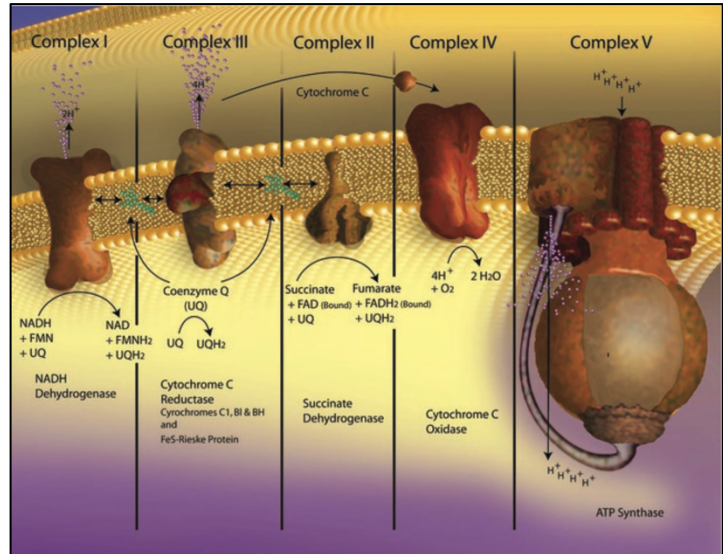


*In the image above factors that dictate metabolic capacity or the ceiling are factors that affect mitochondrial function. Poor mitochondrial function will become limiting when there becomes more stress than you are able to adapt or compensate for and you hit the ceiling!*

Whenever we want to create strength or activate a healing response in the body it is always through stressors acting on your genes where your body responds and you have a net gain in health. They call the zone that you benefit most from the hormesis zone. The familiar zone is when there is too little to activate any changes and the danger zone is when it's too much activation or stimulation. The metabolic ceiling is what limits the hormetic zone's outer boarder. Using metabolic medicine to support the mitochondrial function, you get stronger autonomies and better fuel delivery and utilization. This way you have a positive effect on how far you can push into the hermetic zone before hitting the danger zone.

## The Cytochrome Complex. What is it & why would you want to know about it?

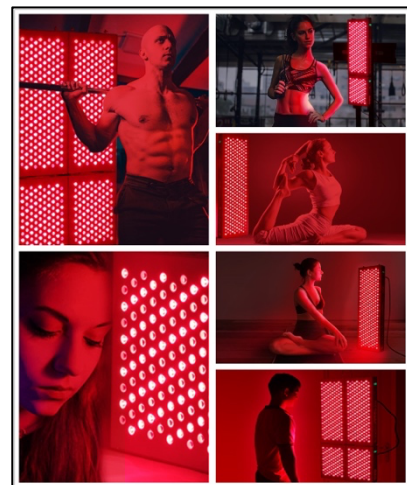
The word cytochrome when you break it down is cyto /cell and chrome/light. It is a way your cells can use the energy in light to convert it into energy. The cytochrome complex consists of cytochrome I-VI and consist of small "heme proteins" found associated with all of your mitochondria. The complex belongs to the cytochrome c family of proteins and plays a major role in cell apoptosis and is an essential component



of the electron transport chain, where it actually carries an electron. It primarily transfers electrons between Complexes III (Coenzyme Q) and IV (CCO). The cytochrome complex helps your mitochondria shuffle electrons which allows your cells to make energy. Next, I will get into red light therapy and how your mitochondria convert red light into ATP and later how methylene blue can supercharge this system.

## Red Light Therapy & Photo-Bio-Modulation.

Photo-bio-modulation refers to Photo/light, Bio/Your Body. Cells then, of course, have the ability to modulate them to support them to be stronger and more resilient. Photo-bio-modulation therapy relies on the use of specific light parameters to promote tissue repair. Although demonstrated in different cell models and tissues. Studies suggested that cellular healing and repair is enhanced by both red and near-infrared light. Photobiomodulation involves the activation of the mitochondrial respiratory chain using the cytochrome



complex. The healing effects of light therapy was first used in the late 1800s to treat skin tuberculosis (TB), and NASA used it in the 1980s to grow plants in outer space.

Low-level laser/light therapy or photobiomodulation, refers to the use of red-to-near-infrared range (620–1100 nm) to stimulate cellular functions for physiological or clinical benefits.

Photobiomodulation has been used to improve wound healing [1,2](#), reduce pain [3,4](#), and many other healing and regenerative applications. The light can be supplied by lasers or light-emitting diodes (LEDs). Transcranial LLLT has amazing therapeutic

uses in various neurological and psychological conditions, including ischemic stroke [5,6](#), chronic traumatic brain injuries [7,8](#), and depression [9,10](#). Using endo-nasal along with transcranial LLLT is a promising upgrade. A Study using a LLLT to the forehead, Barrett and Gonzalez-Lima demonstrating that LLLT to the forehead benefits cognition in healthy humans, including enhanced attention, working memory, and executive functions [11,12,13](#). Remember though the red light only works on the one cytochrome oxidase (CCO) complex IV. What if we can get all 4 complexes to activate? We will discuss ways to further enhance this to the max for even greater benefit.

Red light as a treatment is considered bio-active in humans cells and can directly and specifically affect and improve mitochondria function through the CCO. [\[14\]](#) Red light photons are absorbed by our cells and converted to energy. This energy produced can then stimulate the production of collagen, elastin, and adenosine triphosphate (ATP), which is great for skin however it goes much deeper and can have diverse positive effects on all aspects of health and vitality due to its mitochondrial enhancing properties.

In the study “Interplay between up-regulation of CCO and hemoglobin oxygenation induced by laser”, the author describes how this process using red-to-near-infrared light can stimulate cellular functions for physiological or clinical benefits. The mechanism of LLLT is assumed to rely on photon absorption by cytochrome c oxidase (CCO). [\[15\]](#)

A [case study at UCSF](#) found light therapy had positive effects for a pro hockey player with persistent post-concussive symptoms, [\[16\]](#) and several VA Boston case studies showed good outcomes of [light therapy for former pro football players](#) with symptoms due to repetitive head impacts. In addition, researchers are studying light therapy for PTSD, [Parkinson’s Disease](#) (see

also Dr. John Mitrofanis' book *Running in the Light*), Alzheimer's Disease, and dementia. The effects include increased cerebral blood flow, increased (ATP) energy production, increased neuroprotection and brain repair, and reduced inflammation. A 2019 study found that using light therapy applied to the head (transcranial) and intra-nasally has a positive effect on brain wave patterns in just one treatment; read



more about the study [here](#). [17] I wish I could place lasers on my balloons when I treat patients! Using red light therapy may enhance any endo-nasal release program. We use it intravenously as well with Lumestem. The use of this type of therapy into the ears holds promise. Read more about this in chapter 11. Red light therapy is best done for NO more than 10 minutes per day. I personally stand between eight panels every morning. Next, we dive into how you can enhance all 4 cytochrome subunits to really drive healing and regeneration.

## **Introduction to Methylene Blue. A Key to Cellular Wellness**

A brilliant blue salt, methylene blue or MB was first used as a dye. It is now known that MB improves mitochondria respiration and might be a magic bullet within metabolic medicine. In 1870, MB was discovered and used as an industrial dye. Soon after MB was found to be a great way to stain human tissues and microbes for microscope examination. They found that MB would even inactivate certain microbes. An anti-microbial that leaves cells and tissues virtually unharmed. That's right, a powerful antimicrobial! It gets even more impressive so stay with me. MB was one of the first chemotherapeutic medications ever tested in humans. It was used to treat malaria, in 1891. Of course, it was replaced by antibiotics when they first came on the scene even though MB is superior to them. With heavy marketing by big pharma to doctors a shift was made to these new "superior" anti-microbials. Are they really superior? We have now found that antibiotics can have negative effects to our health through killing our microbiome and that many bugs can become resistant to the antibiotics. The treatment of malaria with antibiotics has proven that this is not the best way as many of the antibiotics have created resistant strains thus making them useless. With MB there has been NO detection that the micro-organism have resistance to MB unlike antibiotics. Your micro biome is an incredibly important diverse group of bacteria that coexist in your body, mostly your gut. The malarial parasites, *Plasmodium*

*falciparum*, is now showing an increased resistance to common antimalarial drugs. As a result, methylene blue is being considered a better option.

## **Methylene Blue & Nitric Oxide**

MB is a powerful inhibitor of nitric oxide or NO. There is a lot of hype around the benefits of NOS and its ability for open up blood vessels to improve circulation. Viagra works on NOS and has been hugely successful to improve the male and female erection. But is it really as safe as is generally thought? There are 3 types of NOS named according to their activity or the tissue type in which they were first described. They

***NOS is a signaling molecule and assists us in stress responses.***

are neuronal NOS (or nNOS), endothelial NOS (or eNOS) and inducible NOS (or iNOS). NOS is released in short and brief moments of stress exposure and it is a vital and important molecule to support us. NOS is also a free radical and is a powerful oxidant that the body needs to neutralize. Too much NOS is associated with tissue damage and is an aging accelerate. It is also part of the toxic air pollutant. In 1990, droves of scientific research were released claiming NOS to be safe as well as a powerful molecule to treat many diseases such as erectile dysfunction, heart function and as a stroke preventative. In 1992, NOS was pro-claimed molecule of the year. NOS went overnight from toxic free radical to miracle drug.

## **NOS is Part of the Bodies Stress Response!**

NOS is a signaling molecule and is best used in short and measured dosage. We use Ozone in our clinic with great success and it is also a powerful free radical. Why is ozone helpful? Ozone like NOS is a signaling molecule and signals stress in the body that can enroll a hermetic response as long as its dosage is within the hermetic zone and not into the danger zone.

Chronically elevated NOS or ozone would NOT be beneficial to the body for the same reasons.

NOS is taken commonly by body builders and men with ED on a daily basis. l-arginine and citrulline are both precursors to NOS that are in many body building and endurance supplements.



NOS can give you a pump through an enhanced inflammatory response within the muscles but may not be the healthiest strategies long term.

Also, anyone looking at maximizing fitness might consider this study in 2015 where a scientist found that NOS powerfully inhibits testosterone. Using a NOS inhibitor like MB might negate these effects as in the above study. “Warning to men: Erection drugs might kill you!” In this article by Michael Castlemen. [18] Since its approval in 1998, Viagra has been implicated in 1,828 deaths and Cialis 236 and Levitra 221. Between the 3, that accounts for 2500 deaths and 25,000 other side effects such as mini stroke, vision loss and hearing loss.

The dirty secret with these studies is that the studies look at only a few thousand and if a drug kills say 1 in say 100,000 that side effect may not show up in the study. The problem is that millions of men are now taking Viagra and the results are that thousands have died due to this fact. The most common problem

The Nitric Oxide  
(NO) Theory Of  
Aging | Ray Peat  
Forum

that leads to death is when there is a co-administration of nitroglycerine so the person would get a double dose of NOS in that case.

Chronic elevated NOS levels can cause cardiovascular disease, MS, Alzheimer's, Dementia and other degenerative neurological diseases. Recent study showed a dramatic increase in skin cancer after Viagra use with an 84% increase in melanoma. [19]

Just because NOS dilates blood vessels doesn't mean it's good for you long term. It will help the tissues receive more blood flow however due to the cytokine elevation it will inhibit the oxygen utilization through the electron transport chain through inhibition of CCO. NOS in high amounts cause the opposite and you will have vasoconstriction. NOS is also involved in the inflammatory response. [20]

In the paper called “The NOS Hypothesis of Aging” the author presents the causes of aging, suggesting one of the prominent theories of aging is the free radical theory. According to this theory, free radicals generated through mitochondrial metabolism can act to cause abnormal

function and cell death. Various toxins in the environment can injure mitochondrial enzymes, leading to increased generation of free radicals that, over the life span, eventually play a major part in aging. [21] Aging of the anterior pituitary and pineal will result in decreased secretion of pituitary hormones and the pineal hormone melatonin. The induction of iNOS in the temperature- regulating centers by infections may cause the decreased febrile response in the elderly by loss of thermosensitive neurons. NOS may play a role in the progression of Alzheimer's disease and Parkinsonism.[22] Activation of cytokine and iNOS production in the cardiovascular system leads to coronary heart disease. [23] Antioxidants, such as MB, melatonin, vitamin C, and vitamin E play important roles in reducing or eliminating the oxidant damage produced by NOS. [24]

NOS and angiogenesis. In the short term, like following an injury, elevated levels of NOS to increase angiogenesis might be helpful, however, chronic activation of angiogenesis might put you as a higher risk of cancer.

It's not the virus that kills, it's the cytokine storm. NOS is the primary molecule that causes the cytokine storm. The cytokines then signal a shift in the cellular energy away from the electron transport chain to aerobic glycolysis. This cuts down available energy by 90% causing the immune system to literally starve and become taken over by the infection. This is, in essence, the cytokine storm with COVID-19 and any other viral infection. We will dive deeper into how MB supports recovery from infection later. Its inhibition of NOS is one way besides its anti-viral properties.

Looking close up one see's NOS as an enhancement of circulation however step back and look at things more wholistically it's clear that it's not the right approach and its likely to cause more harm than good. MB as a powerful inhibitor of NOS and this is one of the ways MB supports the body.

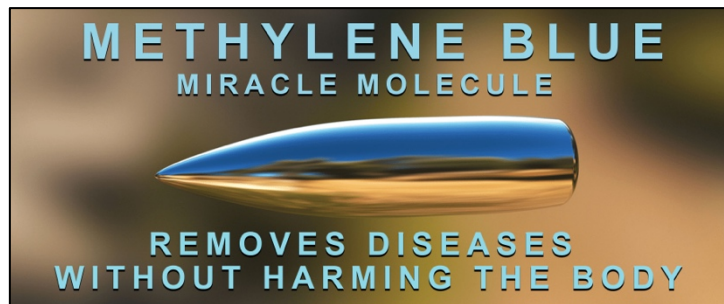
## Methylene Blue: Magic Bullet.

The term **magic bullet** is a scientific concept developed by a German Nobel laureate **Paul Ehrlich** in 1900.[25]

Ehrlich formed an idea that it could be possible to kill specific **microbes** (such as bacteria), which cause diseases in the

body, without harming the body itself. He named this agent as *Zauberkegel*, the "magic bullet."

This magic bullet was methylene blue! Methylene blue does seem to have very little negative effects and is extremely safe to consume. Since it works on an upstream aspect of health which is the energy production or metabolism, it supports the body in a wide range of conditions. If you give the energy reserves the body needs to work, it will correct disease much better than any man-made chemical such as with virtually all pharmaceutical approaches to health and disease.

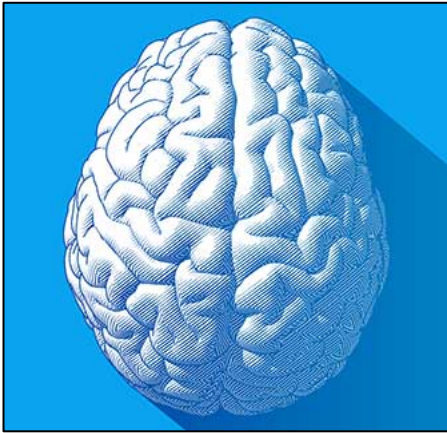


## Methylene Blue & Mitochondria

Methylene blue is anti-inflammatory and neuroprotective showing promise in treatment of diseases such as stroke, Alzheimer's disease and Parkinson's disease. [26]

Remember your mitochondria works through the electron transport chain where it shuffles electrons, which releases chemical energy that the body uses to make ATP, which is the energy currency in our cells. Methylene blue is an electron carrier and even recycles electrons, which allows it to improve mitochondrial function. It basically turns your mitochondria into super mitochondria! It is highly beneficial in toxic situations in the brain as it encourages cellular oxygen consumption and decreases anaerobic glycolysis. This fits into the melatonin conversation where stress induces cytokines (inflammation) and causes the cell to switch to the inefficient, anaerobic glycolysis. We will dive into melatonin in another section. Where methylene blue really shines is that it improves the electron transport chain in the mitochondria such that it recycles electrons. This shifts your cells into a very efficient energy producing quality.

## Methylene Blue & The Brain



Studies show a memory-enhancing and neuroprotective metabolic mechanisms of action of methylene blue for the brain. The memory-enhancing effects have been associated with improvement of memory consolidation. In addition, low doses of methylene blue have also been used for neuroprotection against mitochondrial dysfunction in human disease. There are neurometabolic mechanisms for memory enhancement and neuroprotection from methylene blue. [27]

Another study showed that MB administered could enhance memory through an increase in brain cytochrome oxidase activity. Another study using brain MRI's showed impressive brain support. Multimodal Randomized Functional MR Imaging of the Effects of Methylene Blue in the Human Brain. [28]

Extinction Memory Improvement by the Metabolic Enhancer Methylene Blue. Ref MB may also function as a cholinesterase inhibitor, [29] increasing the amount of acetylcholine available, a neurotransmitter in the brain responsible for arousal, attention, memory and motivation. [30]

The relationship between methylene blue (MB) and Alzheimer's disease (AD) has recently attracted increasing scientific attention since it has been suggested that MB may slow down the progression of this disease. MB has been shown to reverse the formations of amyloid plaques and neurofibrillary tangles responsible for AD, and to partially repair impairments in mitochondrial function and cellular metabolism. [31] This pharmaceutical drug derived from MB has also shown benefit in both Alzheimer's disease and frontal temporal dementia (Lewy Body Disease) and is currently in late phase trials. [32] I'm sure these types of trials may place MB at risk of becoming too expensive for many of us. MB has also been shown to assist healing in traumatic brain injuries by promoting a self-cleaning mechanism called Autophagy and calming down the inflammation that occurs after a head trauma that is associated with microglial cells becoming over activated. "Methylene blue exerts a neuroprotective effect against traumatic brain injury by promoting autophagy and inhibiting microglial activation." [33]

## Methylene Blue is Anti-Viral.

Besides improving mitochondrial function, methylene blue also has antiviral properties. It displays broad-spectrum virucidal activity in the presence of UV light and has been shown to be effective in inactivating various viruses in blood products prior to transfusions. [34] Methylene blue displays virucidal preventive and therapeutic activity against influenza virus H1N1 and SARS-CoV-2. [35]



A recent French publication on a cohort of 2500 end stage cancer patients treated with MB during the first wave of Covid-19 mentions a possible protective role of MB against respiratory viruses, as this study group showed no reported cases of influenza or SARS-CoV-2 infections. [36] It makes sense that immune cells with stronger energy reserves work better to keep you safe from infections. The “inner mask” is more powerful than an outer mask. Experts that have looked into the efficacy of wearing a mask find them to be ineffective anyway. [37]

The body will not become sick or worn out prematurely for no reason. Having treated many diseases over the years, I've come to the conclusion that it's either toxins or infections that are at the root of the disease. New science is demonstrating that many of the proteins such as beta amyloid and alpha synuclein are the immune system's response to these toxins and or infections and most often there are both involved. I have found virtually all of the patients that have come to me test positive for at least one but typically two different viruses. I often test for Epstein Barr, cytomegalovirus, and HHV6 as well as an immune marker called CD57. A lab called Cyrex runs an array 12 that tests about 25 different microbes. Things like ozone & methylene blue have qualities to both improve mitochondrial status as well as having an antiviral/anti-microbial effect making them great therapeutic substances for any brain-based conditions.

## Methylene Blue is an Anti-depressant

In higher doses, methylene blue seems to be a powerful anti-depressant. Keep in mind that in higher doses, MB acts as an MAO inhibitor. This is why it can be dangerous to take

antidepressants along with higher doses of MB. In this study, methylene blue at 15 mg/day, was compared with placebo in treatment of severe depressive illness. The 3-week trial showed that the improvement in patients receiving



methylene blue was significantly greater than in those receiving placebo. Methylene blue at a dose of 15 mg/day appears to be a potent antidepressant, and further clinical evaluation is essential. [38]

Methylene blue increases autophagy which is cellular cleaning and recycling. This study showed MB induced neuroprotection by enhancing autophagy. [39] Due to this, methylene blue might be considered something helpful during fasting. We will get into fasting a little later. In order fully understand fasting and how it works to enhance your mitochondria, we need to review some concepts on how the body clears out old cells and mitochondria recycling them into brand new cells and mitochondria.

## **MB, Fasting, Autophagy & Mitochondria**

Mitochondrial dysfunction is a hallmark of metabolic decline (vitality) during aging. [40]. You're constantly replacing your old, weak, dysfunctional mitochondria with new healthy fresh mitochondria or "mito". The population of all the mito of a given cell constitutes your *Chondriome*. Like your microbiome, we have a healthy pool of bacteria or an unhealthy pool. This will dictate how functional they are. The average cell in your body has between 1,000-2,000 mito. Again, they turn over as they get old. They are recycled, and it's a process mediated through a gene expression ruled by [mTOR](#).

The **mTOR** pathway is a central regulator of metabolism (vitality) and physiology (function). Without getting too deep into mTOR, for now, let's just leave it at the fact that when mTOR is inhibited, we shift into a cleaning and recycling phase where we see Autophagy and Mitophagy. [Autophagy](#) is a Latin word that translates into "self-eating." [Autophagy](#) is the body's way of cleaning out damaged cells in order to regenerate newer, healthier cells. [41]

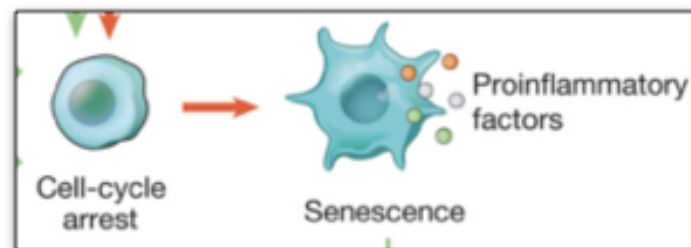
**Mitophagy** is the selective degradation of mitochondria by autophagy. It often occurs to defective mitochondria following damage or stress. [42] Remember all the types of stress? These ALL have an impact on the demand for Mitophagy to be activated through mTOR! [43] So what activates mTOR and Autophagy? Fasting is the primary activator of this process and MB also activates it! We will revisit this soon, but first, we need to talk about senescent cells. What are senescent cells, and how do they have a detrimental effect on health and life span? As they accumulate, due to poor Autophagy (which normally removes and recycles them), they turn into fresh, healthy cells and fresh, healthy mito.

## Cellular Senescence, Zombie Cells & How to Recycle to New Cells.

Cellular senescence is an irreversible cell-cycle arrest mechanism that acts to protect against cancer. [44]

Basically, cellular senescence is a permanent state of sleep a cell goes into. This state is associated with a

release of inflammatory products, and higher energy consumption, pulling it away from your healthy cells. They are zombies in the literal sense! Production of pro-inflammatory cytokines, is a common feature of senescent cells.



These “zombies” will float around your body spewing inflammation and sucking the life out of your body, by deferring vital energy that would normally be going to healthy cells.

We discussed ozone as a signaling molecule when we discussed NOS. Ozone works through hermetic activation in the body which results in a very powerful autophagy and mitophagy response. NOS, on the other hand, inhibits autophagy. [45] I will often have my patients do ozone and MB during their fasting phase. There are home units you can purchase and do rectal instillations that are very powerful. There are also saunas that can be purchased that deliver ozone quite efficiently. As stated, methylene blue such as in Lumotol Blue activates autophagy and can be taken during fasting. [46]

## Silver & Gold Enhance MB.

Using nano silver and gold mixed with MB can greatly enhance its photobiomodulation abilities. The precious metals work by enhancing the cytochrome complex when combined with MB which allows more electrons to flow through the chain within the mitochondria.



Silver Nanoparticles Decorated with Methylene Blue Potentiated the Photodynamic Inactivation of *Pseudomonas aeruginosa* and *Staphylococcus aureus*. [47] Synergistic reaction of silver nitrate, silver nanoparticles, and methylene blue against bacteria. [48]

The antimicrobial properties of light-activated polymers containing methylene blue and gold nanoparticles. [49] Gold nanoparticles has been studied in combination with MB for cancer with great promise as it supports photodynamic therapy (PDT). [50]

I have developed a special medical protocol called LumeBlue, combining nano gold, nano silver and MB together in an infusion. Once the IV is dripping into the patient, a Laser IV is started using 660nm wavelength to photoactivate the mixture. The IV lasts about 45 minutes to 1 hour. Oxygen therapy following the IV has great benefit. In my clinic, we use both hyperbaric oxygen therapy or the CVAC chamber. Oxygen therapy enhances the LumeBlue protocol due to drive more oxygen into the cells to further support the electron transport chain within the mitochondria.

## Guidelines to Methylene Blue Use.

According to experts, the proper dosage for methylene blue is between 20 and 60 mg per day. Lower doses may be taken if nano silver and gold are combined with the MB for greater effects. Much higher doses can be used in special circumstances, however, there can be a diminishment in effect with doses higher for mitochondrial support. It's important that higher doses be

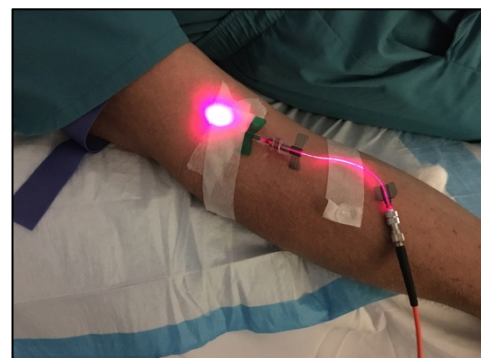


monitored through a healthcare practitioner. One of the concerns with methylene blue consumption is serotonin storm when methylene blue is taken with SSRIs, SNRIs or drugs that increase serotonin levels such as anti-depressants and other MAOI inhibitors. Do not take MB if you are pregnant or breastfeeding as it is contraindicated. At high doses (>10mg/kg), methylene blue may cause a litany of potential side effects including hypertension, methemoglobinemia, dizziness, GI distress, alters pulse oximeter readings, can induce hemolytic anemia in people with a genetic condition called G6PD.



It is important that your source of methylene blue is pharmaceutical grade as any other level of quality may carry significant heavy metals and other toxins. MitoZen.com carries a few different products that contain clean MB. You can find sublingual methylene blue in drops or troche's however this will turn your mouth completely blue which may look strange. MB is safest and best absorbed when it is slowly released into your body. MitoZen.com has created a suppository called Lumetol Blue which may provide better absorption due to the sustained release. This product can also be taken orally and will not leave any blue stain in your mouth if you break up the 300 mg suppository into quarters and place the ¼ suppository toward the back of your throat and swallow it down with a drink.

The use of methylene blue intravenously in my clinic along with red light & oxygen therapy has shown to be of benefit in most all cases that I have used it. Because supporting mitochondria and overall cellular energy is such an “upstream” therapeutic it has benefited many of my patients with a variety of conditions. I’ve used this protocol on neurological cases such as Parkinsons & brain injuries, Lyme & mold cases, viral infections, autoimmune conditions and general wellness/longevity programs. Methylene



*LumeStem with Red light at 660nm. Part of the LumoBlue protocol at Advanced Rejuvenation.*



CVAC Pod at Advanced Rejuvenation. Cyclic Variations in Adaptive Conditioning is what CVAC stands for.

blue is considered photo dynamic, meaning that it has a response to light. Red light in particular in the 660 nm is the sweet spot for methylene blue. We use a system called Lumestem which is an intravenous laser along with the methylene blue. We also use red light panels where you stand in front of them and receive the light therapy through the skin after a MB infusion.

We will then use either hyperbaric oxygen therapy or the CVAC pod. Flooding the body with oxygen after MB further drives ATP production after receiving MB. We call this protocol LumeBlue. This protocol can also be combined with fasting to allow for proper autophagy and mitophagy to create new strong mitochondria. I have been working with a protocol that can be done at home using methylene blue and redlight panels. Using a suppository called Lumetol Blue along with red light panels set to 660 nm called MitoLights. It's also great to go out and get some sun after receiving MB to gain even more photobiomodulation activity.

## **“At home” example of a MB program.**

If you are unable to get to a clinic that provides MB IV, then I have designed a program for those that would like to effectively use MB at home. Since there are only a handful of clinics that are properly trained in the use of MB this might be your best option. You can find MB as an oral tincture, nasal spray and suppository through *MitoZen.com*. This is the *Lumetol Blue* line of products. The Lumetol Blue suppository comes in a 60 and 300 mg dose. The 60 mg is recommended for rectal delivery and is well tolerated. The 300mg is not well tolerated rectally and it is better for orally delivery and will not leave any blue stain in your mouth if you consume it correctly. First break up the 300 mg suppository into quarters and place the ¼ suppository toward the back of your throat and swallow it down with a drink. Its best to give yourself 15 minutes between each ¼ as to not cause nausea. I find that having my patients pulse the MB 2-4 times a week seems to work best. On days you choose to take MB, you might consider your dose per day you would like to be at. Of course, it's best to find a health care provider that can advise you. However, if you need support, then you could reach out to my team about my coaching

programs. See our email after the conclusion. Let's say you wanted to dose 200 mg per day for 3 days. You could take one suppository and ½ of the 300 mg *Lumetol Blue* (two ¼ pieces or 150mg) of such that you take the 60 mg suppository in the am after your morning bowel movement and at the same time the two ¼ pieces. After 30 minutes to an hour, if you can, get in front of a red-light panel that is set to 660 nm. *MitoLights* are panels set to work with MB and are also available through *MitoZen.com*. Generally, it is suggested to do only 10 minutes a day with red light therapy, however on MB days, I often suggest that my patients do 2 or even 3 sessions spread out though out the day. I also suggest as much direct sunlight as you can on MB days. I will also suggest my patients consume 1 tablespoon of Argentyn 23 or Sovereign colloidal silver 3 times throughout that day as well. If you have a hyperbaric soft chamber at home or a clinic that has one you might consider doing that on your MB days within 1-2 hours of consuming the MB.

Keep in mind MB is also a good supplement to take along with fasting as it promotes autophagy. Timing is best if you take it in the morning if you're doing intermittent fasting and skipping breakfast. This protocol can be done for a month to boost cellular energy or for multiple months as MB is safe to take long term such as with the case of degenerative neurologic disease. Lower dosing such as 10-20 mg per day of MB may be considered in many cases and the Lumetol Blue tincture or nasal spray might be a consideration. These lower doses should also be used with red light, silver, and an oxygen therapy if available. Also be prepared to see blue to green urine for up to 2 days following an MB Day.

## Conclusion

There are few things more important than a strong metabolic status. Keeping your cells energized allows the full expression of life force through your body, particularly important to your brain and heart. MB will work much better when you are getting proper sleep. I suggest that you track your sleep and make sure you're getting enough R.E.M. and Deep Sleep. Sleep will support your stress adaptation response and metabolic status. When considering MB, consider all of the stressors that we have in today's world which makes it more

**Metabolic medicine addressing the mitochondria and the energy reserves in the body is the most powerful medicine available, restoring health at its core.**

important for us to take some extra precautionary steps. It's as easy as integrating some rituals into your daily routine. 10 minutes of red-light therapy in the morning with a device like the *MitoLight* should be considered along with methylene blue such as *Lumetol Blue*. I have designed a fasting protocol called Fast Track Fast. Red light therapy along with fasting with Fast



Track Fast are great options to enhance your health through metabolic pathways... what I call “upstream

therapies”. These are therapies which address metabolic conditions through enhancement of the mitochondria. Many types of treatments and modalities are what I called downstream where it addresses genes or enzymes or various chemical reactions in the body. In my clinical practice I prefer to go as upstream to the core of what's disturbing the health and vitality of the cell. Remember the body is an amazing machine with self-regulating, self-healing through the innate intelligence within the body. When your cells are given the right energy, that wisdom can do a much better job than throwing chemistry at a specific system. When you address the function of the mitochondria through metabolic medicine you have what I consider to be the ultimate situation to recover from a condition or simply be at your functional best. I always recommend people work with a healthcare provider whenever they start any type



of program using MB. For more information on melatonin go to the website [melatoninbook.com](http://melatoninbook.com) to find my book [Melatonin: Miracle Molecule](#).

## References

1. Eells, J. T. et al. Mitochondrial signal transduction in accelerated wound and retinal healing by near-infrared light therapy. *Mitochondrion* 4, 559–567, doi: 10.1016/j.mito.2004.07.033 (2004).
2. Wong-Riley, M. T. et al. Photobiomodulation directly benefits primary neurons functionally inactivated by toxins: role of cytochrome c oxidase. *J Biol Chem* 280, 4761–4771, doi: 10.1074/jbc.M409650200 (2005).
3. Chow, R. T., Johnson, M. I., Lopes-Martins, R. A. & Bjordal, J. M. Efficacy of low-level laser therapy in the management of neck pain: a systematic review and meta-analysis of randomised placebo or active-treatment controlled trials. *Lancet* 374, 1897–1908, doi: 10.1016/S0140-6736(09)61522-1 (2009).
4. Kingsley, J. D., Demchak, T. & Mathis, R. Low-level laser therapy as a treatment for chronic pain. *Front Physiol* 5, 306, doi: 10.3389/fphys.2014.00306 (2014).
5. Lampl, Y. et al. Infrared laser therapy for ischemic stroke: a new treatment strategy: results of the NeuroThera Effectiveness and Safety Trial-1 (NEST-1). *Stroke; a journal of cerebral circulation* 38, 1843–1849, doi: 10.1161/STROKEAHA.106.478230 (2007).
6. Zivin, J. A. et al. Effectiveness and safety of transcranial laser therapy for acute ischemic stroke. *Stroke* 40, 1359–1364, doi: 10.1161/STROKEAHA.109.547547 (2009).
7. Naeser, M. A., Saltmarche, A., Kregel, M. H., Hamblin, M. R. & Knight, J. A. Improved cognitive function after transcranial, lightemitting diode treatments in chronic, traumatic brain injury: two case reports. *Photomed Laser Surg* 29, 351–358, doi: 10.1089/pho.2010.2814 (2011).
8. Naeser, M. A. et al. Significant improvements in cognitive performance post-transcranial, red/near-infrared light-emitting diode treatments in chronic, mild traumatic brain injury: open-protocol study. *J Neurotrauma* 31, 1008–1017, doi: 10.1089/neu.2013.3244 (2014).
9. Schiffer, F. et al. Psychological benefits 2 and 4 weeks after a single treatment with near infrared light to the forehead: a pilot study of 10 patients with major depression and anxiety. *Behavioral and brain functions* : *BBF* 5, 46, doi: 10.1186/1744-9081-5-46 (2009).
10. Disner, S. G., Beevers, C. G. & Gonzalez-Lima, F. Transcranial Laser Stimulation as Neuroenhancement for Attention Bias Modification in Adults with Elevated Depression Symptoms. *Brain Stimul*, doi: 10.1016/j.brs.2016.05.009 (2016).
11. Barrett, D. W. & Gonzalez-Lima, F. Transcranial infrared laser stimulation produces beneficial cognitive and emotional effects in humans. *Neuroscience* 230, 13–23, doi: 10.1016/j.neuroscience.2012.11.016 (2013).
12. Blanco, N. J., Maddox, W. T. & Gonzalez-Lima, F. Improving executive function using transcranial infrared laser stimulation. *Journal of neuropsychology*, doi: 10.1111/jnp.12074 (2015).
13. Hwang, J., Castelli, D. M. & Gonzalez-Lima, F. Cognitive enhancement by transcranial laser stimulation and acute aerobic exercise. *Lasers Med Sci*, doi: 10.1007/s10103-016-1962-3 (2016).
14. Pastore, D., Greco, M. & Passarella, S. Specific helium-neon laser sensitivity of the purified cytochrome c oxidase. *Int J Radiat Biol* 76, 863–870 (2000).
15. Wang X, Tian F, Soni SS, Gonzalez-Lima F, Liu H. Interplay between up-regulation of cytochrome-c-oxidase and hemoglobin oxygenation induced by near-infrared laser. *Sci Rep*. 2016 Aug 3;6:30540. doi: 10.1038/srep30540. PMID: 27484673; PMCID: PMC4971496.

16. [Frontiers | Changes in Brain Function and Structure After Self-Administered Home Photobiomodulation Treatment in a Concussion Case | Neurology \(frontiersin.org\)](#)
17. Zomorodi, R., Loheswaran, G., Pushparaj, A. *et al.* Pulsed Near Infrared Transcranial and Intranasal Photobiomodulation Significantly Modulates Neural Oscillations: a *pilot exploratory* study. *Sci Rep* **9**, 6309 (2019). <https://doi.org/10.1038/s41598-019-42693-x>
18. [Warning to Men: Erection Drugs Just Might Kill You | Psychology Today Australia](#)
19. Li W, Qureshi AA, Robinson KC, Han J. Sildenafil Use and Increased Risk of Incident Melanoma in US Men: A Prospective Cohort Study. *JAMA Intern Med.* 2014;174(6):964–970. doi:10.1001/jamainternmed.2014.594
20. Brown GC, Bal-Price A. Inflammatory neurodegeneration mediated by nitric oxide, glutamate, and mitochondria. *Mol Neurobiol.* 2003 Jun;27(3):325-55. doi: 10.1385/MN:27:3:325. PMID: 12845153.
21. Kirkwood TB, Kowald A. Network theory of aging. *Exp Gerontol.* 1997 Jul-Oct;32(4-5):395-9. doi: 10.1016/s0531-5565(96)00171-4. PMID: 9315444.
22. Kirkwood TB, Kowald A. Network theory of aging. *Exp Gerontol.* 1997 Jul-Oct;32(4-5):395-9. doi: 10.1016/s0531-5565(96)00171-4. PMID: 9315444.
23. Kirkwood TB, Kowald A. Network theory of aging. *Exp Gerontol.* 1997 Jul-Oct;32(4-5):395-9. doi: 10.1016/s0531-5565(96)00171-4. PMID: 9315444.
24. Kirkwood TB, Kowald A. Network theory of aging. *Exp Gerontol.* 1997 Jul-Oct;32(4-5):395-9. doi: 10.1016/s0531-5565(96)00171-4. PMID: 9315444.
25. [Paul Ehrlich - Wikipedia](#)
26. Tucker, D., Lu, Y., & Zhang, Q. (2018). From Mitochondrial Function to Neuroprotection-an Emerging Role for Methylene Blue. *Molecular neurobiology*, 55(6), 5137–5153. <https://doi.org/10.1007/s12035-017-0712-2>
27. Rojas JC, Bruchey AK, Gonzalez-Lima F. Neurometabolic mechanisms for memory enhancement and neuroprotection of methylene blue. *Prog Neurobiol.* 2012 Jan;96(1):32-45. doi: 10.1016/j.pneurobio.2011.10.007. Epub 2011 Nov 3. PMID: 22067440; PMCID: PMC3265679.
28. Rodriguez, P., Zhou, W., Barrett, D. W., Altmeyer, W., Gutierrez, J. E., Li, J., Lancaster, J. L., Gonzalez-Lima, F., & Duong, T. Q. (2016). Multimodal Randomized Functional MR Imaging of the Effects of Methylene Blue in the Human Brain. *Radiology*, 281(2), 516–526. <https://doi.org/10.1148/radiol.2016152893>
29. Pfaffendorf M, Bruning TA, Batnik HD, van Zwieten PA. The interaction between methylene blue and the cholinergic system. *Br J Pharmacol.* 1997 Sep;122(1):95-8. doi: 10.1038/sj.bjp.0701355. PMID: 9298533; PMCID: PMC1564911.
30. Giocomo, L.M., Hasselmo, M.E. Neuromodulation by Glutamate and Acetylcholine can Change Circuit Dynamics by Regulating the Relative Influence of Afferent Input and Excitatory Feedback. *Mol Neurobiol* **36**, 184–200 (2007). <https://doi.org/10.1007/s12035-007-0032-z>
31. Oz M, Lorke DE, Petroianu GA. Methylene blue and Alzheimer's disease. *Biochem Pharmacol.* 2009 Oct 15;78(8):927-32. doi: 10.1016/j.bcp.2009.04.034. Epub 2009 May 9. PMID: 19433072.
32. [Home Page | TauRx Pharmaceuticals](#)
33. Zhao, M., Liang, F., Xu, H., Yan, W., & Zhang, J. (2016). Methylene blue exerts a neuroprotective effect against traumatic brain injury by promoting autophagy and inhibiting microglial activation. *Molecular medicine reports*, 13(1), 13–20. <https://doi.org/10.3892/mmr.2015.4551>
34. Cagno, V., Medaglia, C., Cerny, A. *et al.* Methylene Blue has a potent antiviral activity against SARS-CoV-2 and H1N1 influenza virus in the absence of UV-activation in vitro. *Sci Rep* **11**, 14295 (2021). <https://doi.org/10.1038/s41598-021-92481-9>
35. Cagno, V., Medaglia, C., Cerny, A. *et al.* Methylene Blue has a potent antiviral activity against SARS-CoV-2 and H1N1 influenza virus in the absence of UV-activation in vitro. *Sci Rep* **11**, 14295 (2021). <https://doi.org/10.1038/s41598-021-92481-9>

36. Cagno, V., Medaglia, C., Cerny, A. *et al.* Methylene Blue has a potent antiviral activity against SARS-CoV-2 and H1N1 influenza virus in the absence of UV-activation in vitro. *Sci Rep* **11**, 14295 (2021). <https://doi.org/10.1038/s41598-021-92481-9>
37. Chua, M. H., Cheng, W., Goh, S. S., Kong, J., Li, B., Lim, J., Mao, L., Wang, S., Xue, K., Yang, L., Ye, E., Zhang, K., Cheong, W., Tan, B. H., Li, Z., Tan, B. H., & Loh, X. J. (2020). Face Masks in the New COVID-19 Normal: Materials, Testing, and Perspectives. *Research (Washington, D.C.)*, 2020, 7286735. <https://doi.org/10.34133/2020/7286735>
38. Naylor, G.J., Smith, A.H., & Connelly, P. (1987). A controlled trial of methylene blue in severe depressive illness. *Biological Psychiatry*, *22*, 657-659.
39. Jiang, Z., Watts, L. T., Huang, S., Shen, Q., Rodriguez, P., Chen, C., Zhou, C., & Duong, T. Q. (2015). The Effects of Methylene Blue on Autophagy and Apoptosis in MRI-Defined Normal Tissue, Ischemic Penumbra and Ischemic Core. *PloS one*, *10*(6), e0131929. <https://doi.org/10.1371/journal.pone.0131929>
40. Srivastava S. (2017). The Mitochondrial Basis of Aging and Age-Related Disorders. *Genes*, *8*(12), 398. <https://doi.org/10.3390/genes8120398>
41. Srivastava S. (2017). The Mitochondrial Basis of Aging and Age-Related Disorders. *Genes*, *8*(12), 398. <https://doi.org/10.3390/genes8120398>
42. [Mitophagy - Wikipedia](#) Killackey, S. A., Philpott, D. J., & Girardin, S. E. (2020). Mitophagy pathways in health and disease. *The Journal of cell biology*, *219*(11), e202004029. <https://doi.org/10.1083/jcb.202004029>
43. [10,11 Mitophagy - Wikipedia](#) Killackey, S. A., Philpott, D. J., & Girardin, S. E. (2020). Mitophagy pathways in health and disease. *The Journal of cell biology*, *219*(11), e202004029. <https://doi.org/10.1083/jcb.202004029>
44. Lee, S., & Lee, J. S. (2019). Cellular senescence: a promising strategy for cancer therapy. *BMB reports*, *52*(1), 35–41. <https://doi.org/10.5483/BMBRep.2019.52.1.294>
45. Sarkar, S., Korolchuk, V. I., Renna, M., Imarisio, S., Fleming, A., Williams, A., Garcia-Arencibia, M., Rose, C., Luo, S., Underwood, B. R., Kroemer, G., O'Kane, C. J., & Rubinsztein, D. C. (2011). Complex inhibitory effects of nitric oxide on autophagy. *Molecular cell*, *43*(1), 19–32. <https://doi.org/10.1016/j.molcel.2011.04.029>
46. Jiang, Z., Watts, L. T., Huang, S., Shen, Q., Rodriguez, P., Chen, C., Zhou, C., & Duong, T. Q. (2015). The Effects of Methylene Blue on Autophagy and Apoptosis in MRI-Defined Normal Tissue, Ischemic Penumbra and Ischemic Core. *PloS one*, *10*(6), e0131929. <https://doi.org/10.1371/journal.pone.0131929>
47. Jiang, Z., Watts, L. T., Huang, S., Shen, Q., Rodriguez, P., Chen, C., Zhou, C., & Duong, T. Q. (2015). The Effects of Methylene Blue on Autophagy and Apoptosis in MRI-Defined Normal Tissue, Ischemic Penumbra and Ischemic Core. *PloS one*, *10*(6), e0131929. <https://doi.org/10.1371/journal.pone.0131929>
48. Runze Li, Jie Chen, Thomas C. Cesario, Xin Wang, Joshua S. Yuan, Peter M. Rentzepis, Synergistic reaction against bacteria, Proceedings of the National Academy of Sciences Nov 2016, 113 (48) 13612-13617; DOI: 10.1073/pnas.1611193113
49. Stefano Perni, Clara Piccirillo, Jonathan Pratten, Polina Prokopovich, Wojciech Chrzanowski, Ivan P. Parkin, Michael Wilson, The antimicrobial properties of light-activated polymers containing methylene blue and gold nanoparticles, Biomaterials, Volume 30, Issue 1, 2009, Pages 89-93, ISSN 0142-9612, <https://doi.org/10.1016/j.biomaterials.2008.09.020>.
50. Junliang Lv, Gongqing Wu, Yang He, Lijuan Zhang, and Yunhong Yi, "Methylene blue-loaded gold nanobipyramids @SiO<sub>2</sub> enhanced singlet oxygen generation for phototherapy of cancer cells," Opt. Mater. Express *7*, 409-414 (2017)

